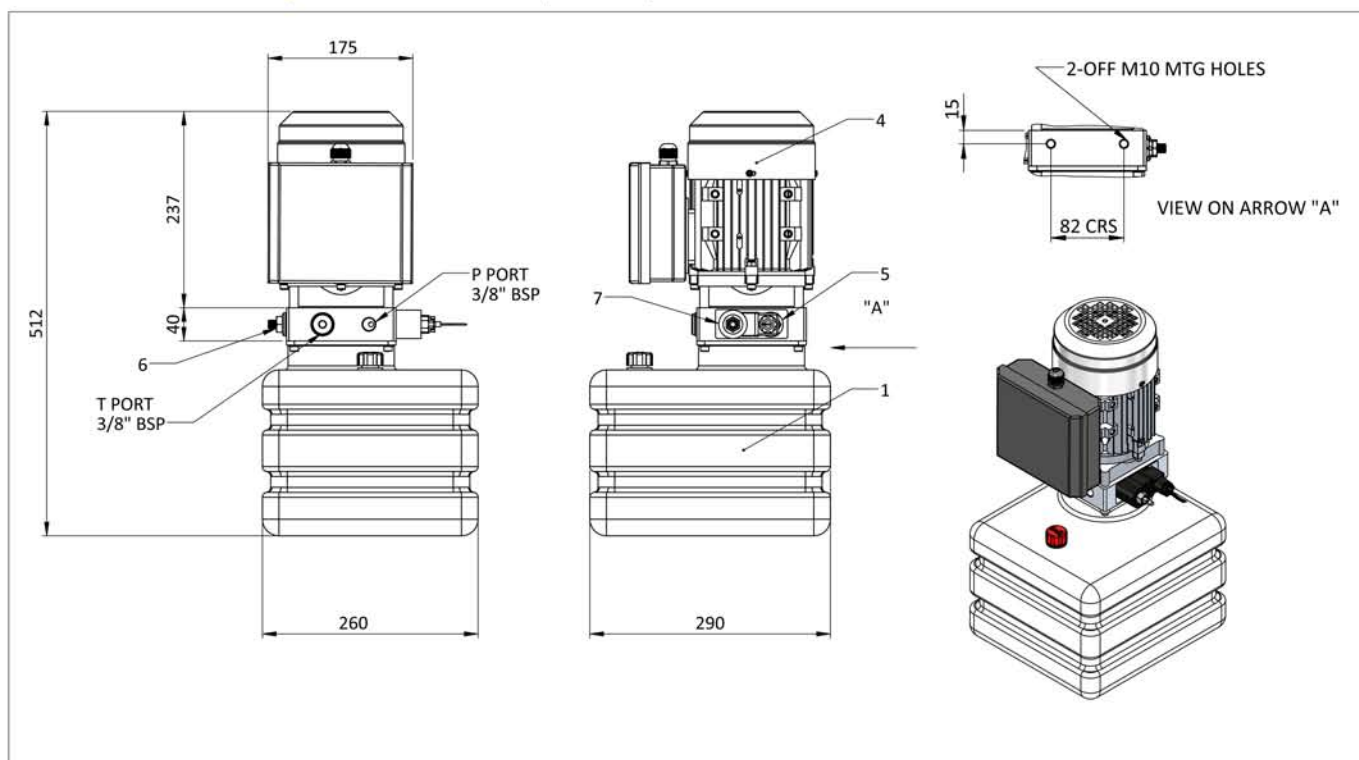
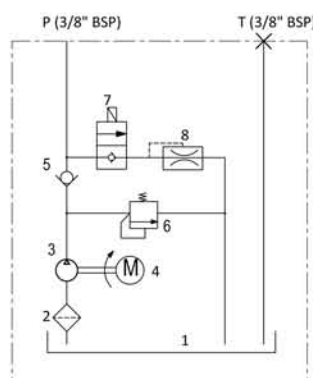


POWER PACKS

Lift Power Pack / YBZ5-B6D3E2/MBQIT1



Motor: 1 PH 0.75Kw 1450 rpm
 Helical Gear Pump: 5.00 cc/rev
 Oil Tank: Plastic 10L
 Max Pressure: 50 bar



Utilising the helical gear pump technology the lift power pack is both quiet and smooth in its operation. The pack works in a single acting operation so when the electric motor is turned on the pressure line is activated. The solenoid lowering valve allows the cylinder to descend but this is controlled via a pressure compensated flow control. This product is used in conjunction with our synchronised telescopic cylinders allowing lift or elevator manufactures to purchase a fully tested hydraulic system from one source.

Please Note! All power packs should be wired by a qualified electrician. Please refer to wiring diagrams at the back of the power packs section.